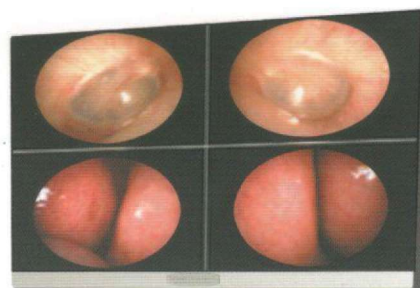


MEDICAL CAMERA SYSTEM

Dr. Camscope Pro LED

- :: Full HD(1080i 60 Frames)
- :: Telemedicine system



Optimizing diagnostic camera system



- Video Rectoscope
- Video Colposcope
- Endoscopic camera system
- Video Dermoscope
- Video Otoscope
- Video Irisscope
- Video scope for optician



Main features

• Optimal solution for Telemedicine system



This is the most suitable medical camera for telemedicine system that enables remote-imaging treatment and prescription through network provided by qualified medical professionals.

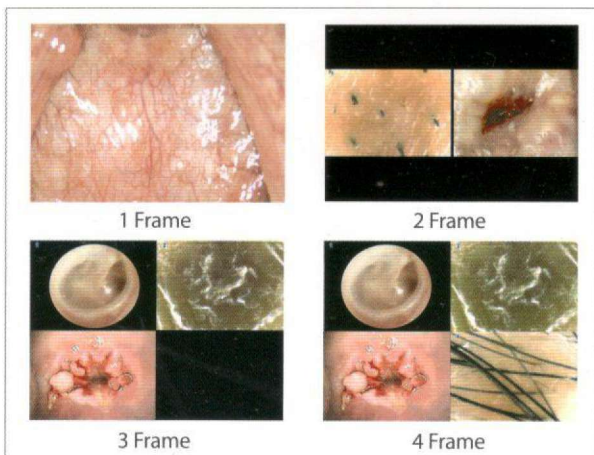
• Convenient joystick

Convenient joystick with each directions can lead to freeze, save and zoom images conveniently.



• Image management

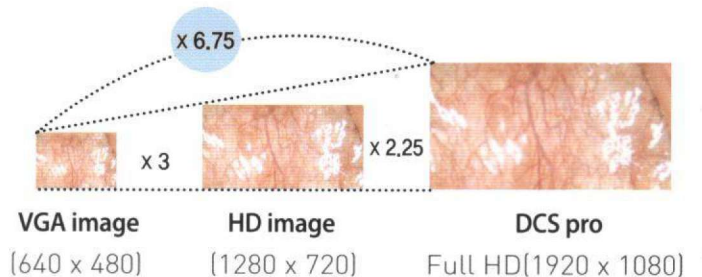
- Captured images can be selectively saved onto internal memory (SD CARD) or USB.
- It can be connected to PC via USB port and manage saved images on main units more efficiently.
- Various comparison and display. [1 to 4 frame]



※ Zoom IN/OUT (X1.0 - X3.0)

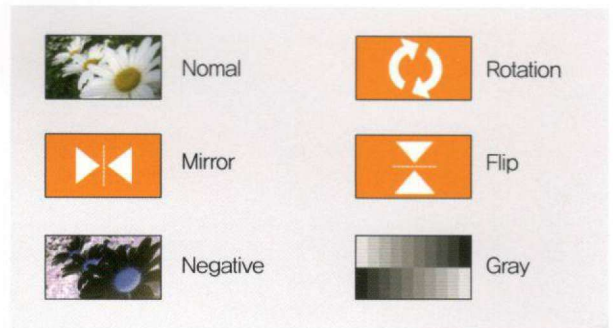
• Full HD(1080i / 60 Frames)

Image quality comparison



• Image Conversion

Image can be converted in various ways

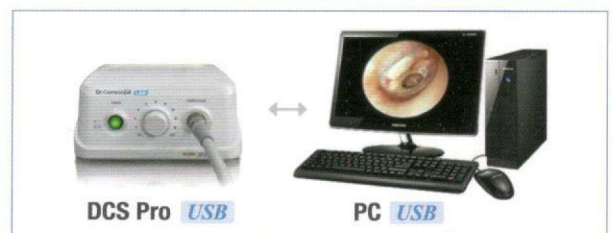


• 18W LED Lamp loaded

18W LED Lamp is brighter than 100W Halogen Lamp. 4800° K color temperature close to natural light makes it possible to realize clearer image than Halogen lamp.

• Easy Connection with PC/Laptops

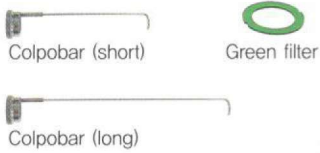
DCS pro can be easily connected to a computer via USB 2.0. Users can save digital data on a computer.



Applications with various accessories

Video Colposcope *DCS-102 Pro*

OB / GYN

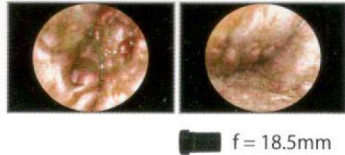


Colposcopy

- Easy diagnosis of Cervix with Colpobar.
- Easy diagnosis of cervical erosion and CIN and CIS using built-in green filter.

Video Rectoscope *DCS-103R Pro*

GS / Proctology

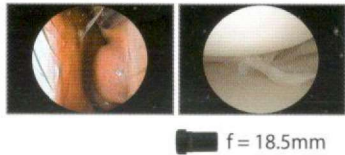


Hemorrhoid

- Anoscope for Internal or External Hemorrhoids, Anal Fissure and Anal Fistula.

Endoscopic Camera System *DCS-103E Pro*

General Surgery

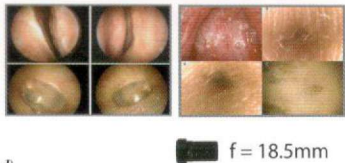


Compatible with various endoscopes

- It is possible to connect rigid endoscopes to durable CCD coupler.

Video Otoscope Camera System *DCS-104T Pro*

ENT / PEDIATRY / I.M / F.M

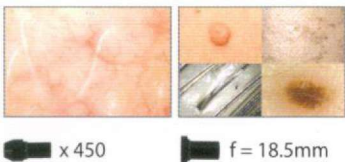
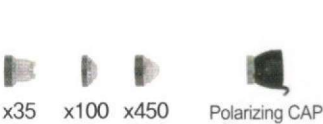


Diagnosis of ear drum and external auditory canal without inserting telescope deeply.

- Optimized telescope diameter (3mm) for pediatric patients.
- Tonsil, larynx, skin can be diagnosed by various accessories.

Video Dermoscope *DCS-105 Pro*

Dermatology / Plastic Surgery

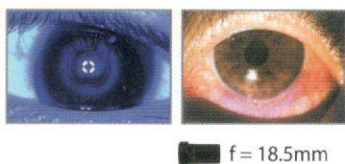


Skin diagnosis

- Side illumination can reduce light reflection and diagnose pore, keratin clearly.
- High magnification by using various kinds of lens and caps.
- Epidermis and pigmentation can be clearly diagnosed.

Video Scope for Optician *DCS-108 Pro*

Optician



Iris diagnosis

- Check on contact lens, conjunctivitis and Iris.

DCS pro Specifications

Functions	FULL-HD Live Image (16:9) Comparison image USB2.0 PC Slave Mode Image Adgustment - Brightness,Sharpness,Contrast,Gamma,Exposure - Image Conversion - Selectable color mode(User 1/2/3/Default) - Stored Image File Play - Create Folder, Delete Folder & File - System Time setting
Camera Resolution	1920x1080
Video Out	1920x1080i, 60 frame, HDMI
PC Interface	USB 2.0 / Slave Mode Directly connected to the PC application
Internl Storage	32G
External Storage interface	USB 2.0 Memory Stic /FAT32
Still image Capture	1920x1080 jpg File
User Key Interface	5 Directional Key
Light Source	18W LED lamp, Color temperature (4800° K), Adjustable light intensity
Cable Length	2.0M
Foot switch	for Freeze & Still Capture
AC Input	90~264VAC Max 45Watt Universal AC Input / Full range
Dimension	Width(209mm) x Depth(101mm) x Height(250mm)

Moving Camera Stand

Optional

- Hole the camera for still image
- Maintaining focus
- Angle control lever
- Easy moving



SOMETECH
SINCE 1989



SOMETECH INC.

(Ace High-end Tower II , Guro-dong) 1201ho, 1204ho, 61, Digital-ro 26gil,
Guro-gu, Seoul, Korea

TEL: +82-2-2025-1000(Rep.) FAX: +82-2-2025-1009

E-mail: overseas@sometechn.com / www.sometech.com